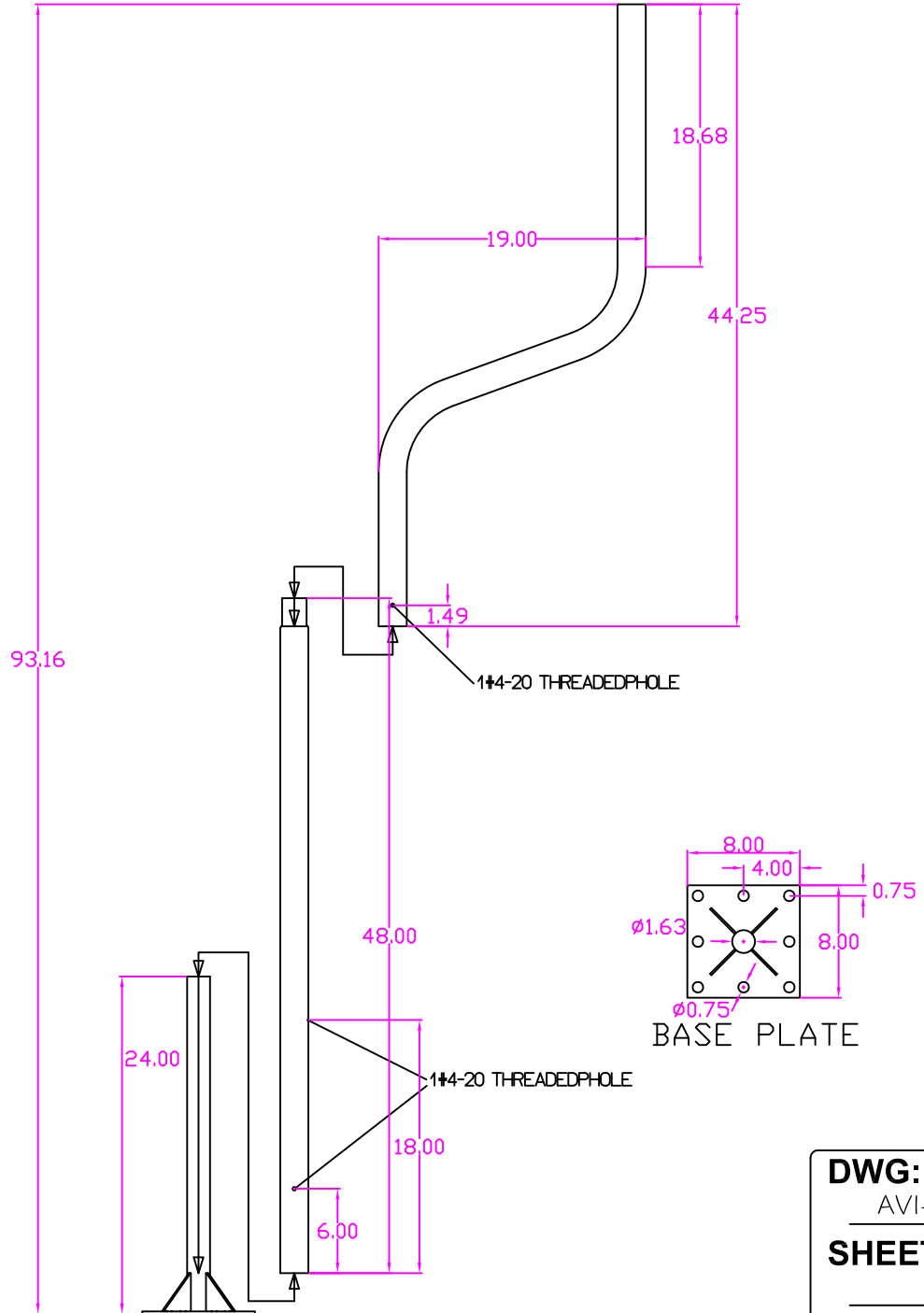


NOTE:

- 1) AVI Stanchion shall use U.S. Steel Only
- 2) AVI Stanchion shall be 2" O.D. (+/-)
- 3) AVI Stanchion shall be Sch.40 Pipe
- 4) AVI Stanchion shall be Hot-Rolled Steel
- 5) AVI Stanchion shall be powder-coated textured black.



DATE:
22-APR-14

DRN. BY:
FMA

CHK. BY:
SMH

DWG:
AVI-360

SHEET:
1

SCALE:
NTS



9651 Chalma Street
Baton Rouge, LA 70814
(225) 216-3922 PH.
(225) 216-9445 FX.

PROJECT: _____

SUBJECT: _____

CONTRACTOR: _____

ENGINEER: _____